



# MIXIT



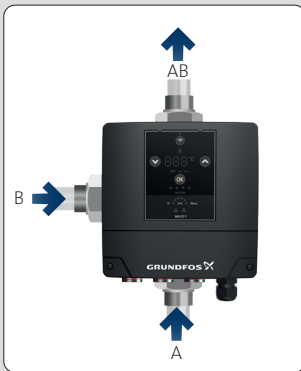
[net.grundfos.com/qr/i/99513532](https://net.grundfos.com/qr/i/99513532)

be  
think  
innovate

**GRUNDFOS** 



MIXIT L

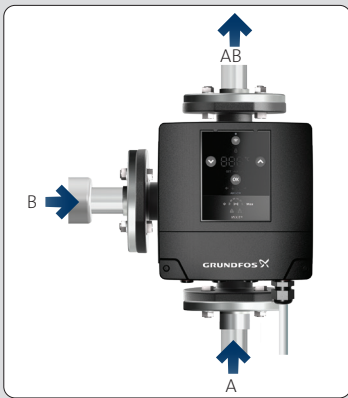


MIXIT R





MIXIT L F



MIXIT R F





Min./Max.  
0 °C – +90 °C

PN 10:10 bar / 1.0 MPa

GRUNDFOS MIXIT

Technical specifications callouts for the Grundfos MIXIT radiator controller include: a prohibition against fire and open flames; a temperature range of 0 °C to +90 °C; and a pressure rating of PN 10:10 bar / 1.0 MPa. The device features a digital display showing 89.0 °C and various control buttons.

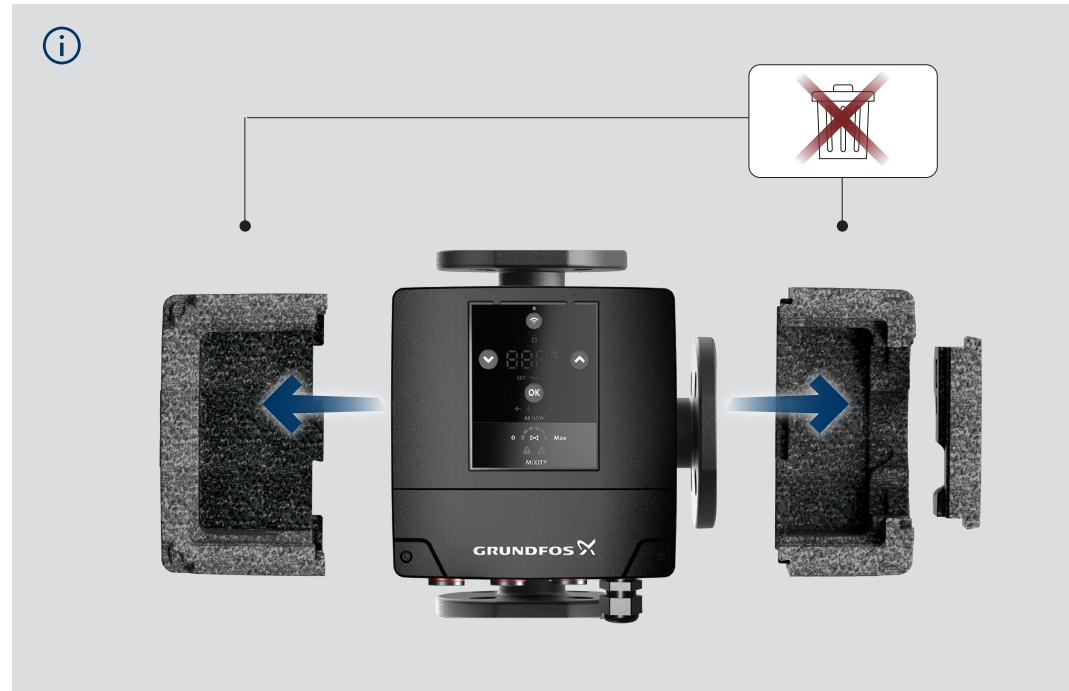
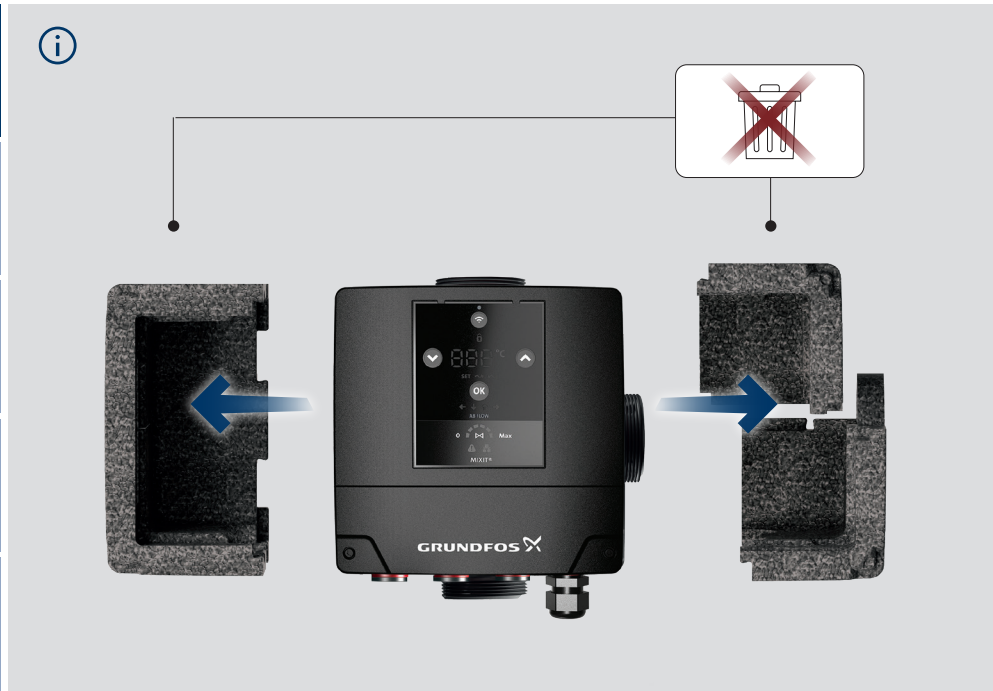
Max. 95 % RH  
IPX4D

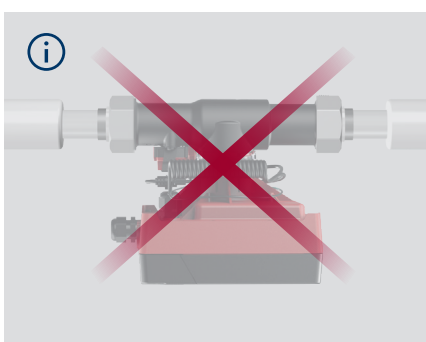
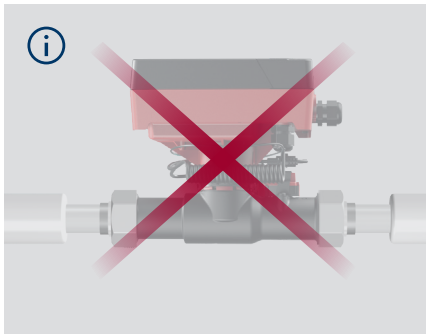
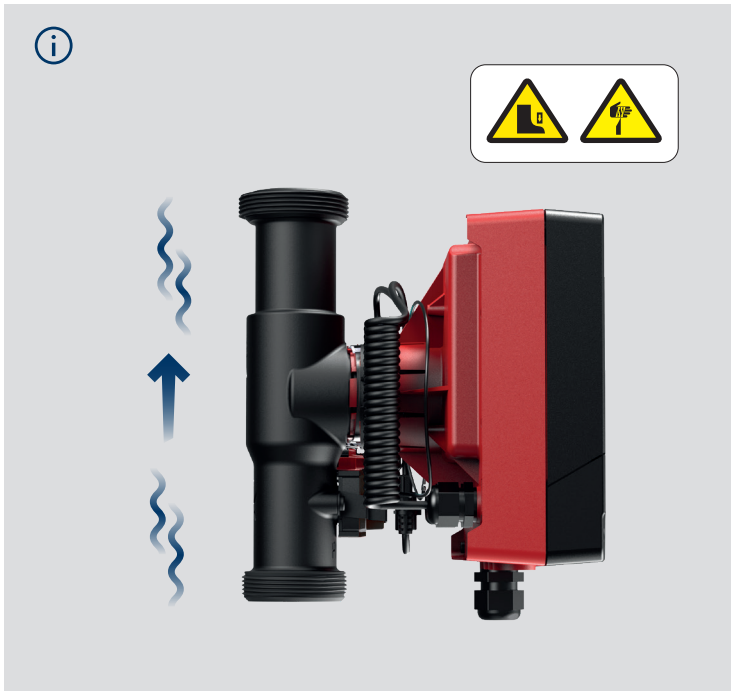
Min./Max.  
0 °C – +50 °C

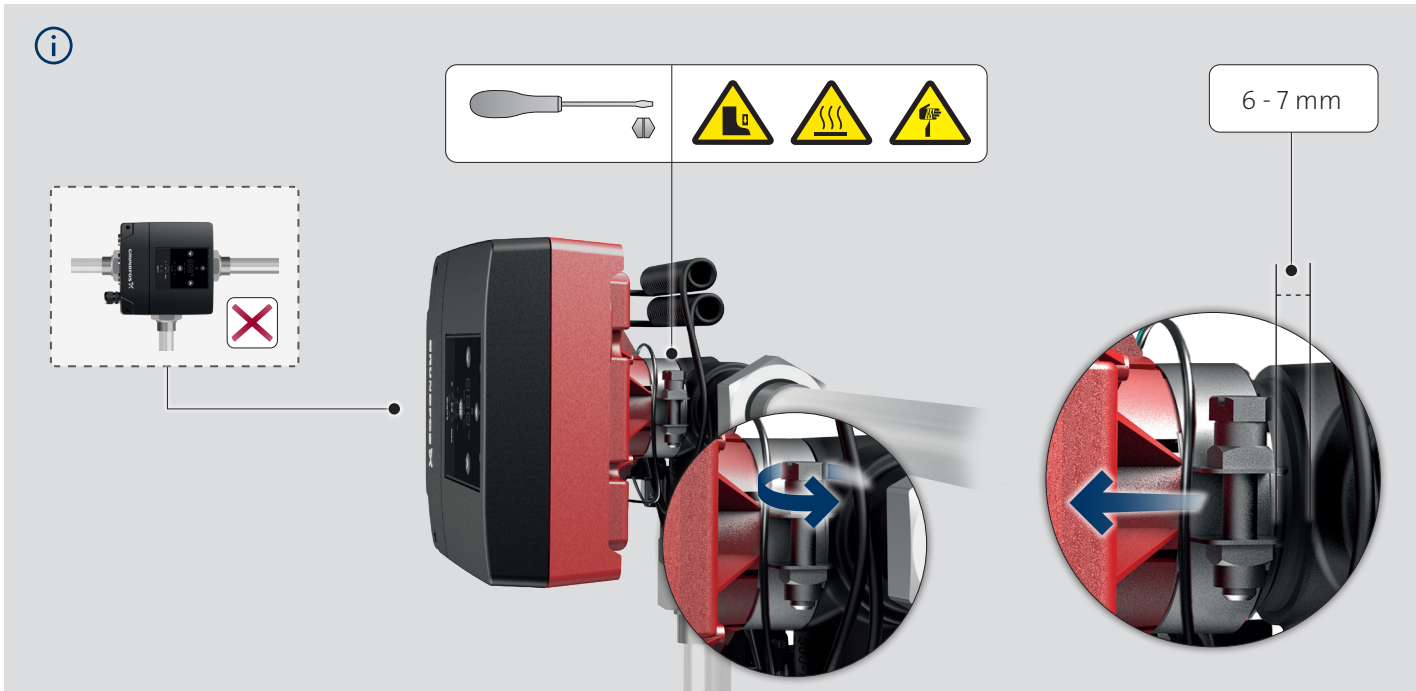
< 40 dB(A)

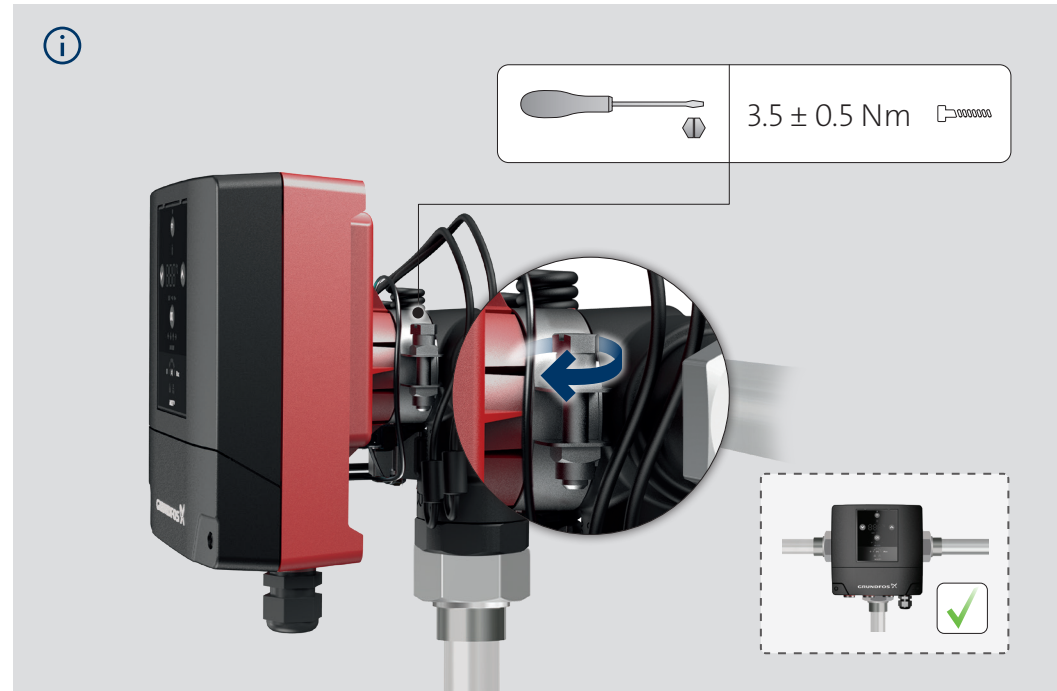
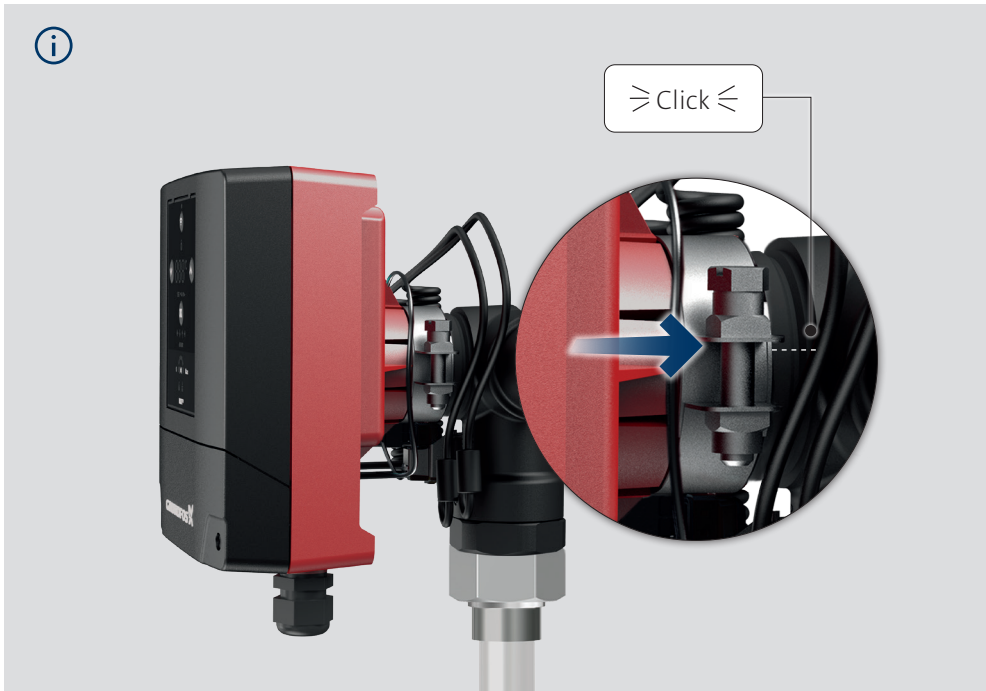
GRUNDFOS MIXIT

Environmental specifications callouts for the Grundfos MIXIT radiator controller include: a maximum relative humidity of 95 % RH with IPX4D protection; a temperature range of 0 °C to +50 °C; and a maximum sound power level of < 40 dB(A). The device features a digital display showing 89.0 °C and various control buttons.









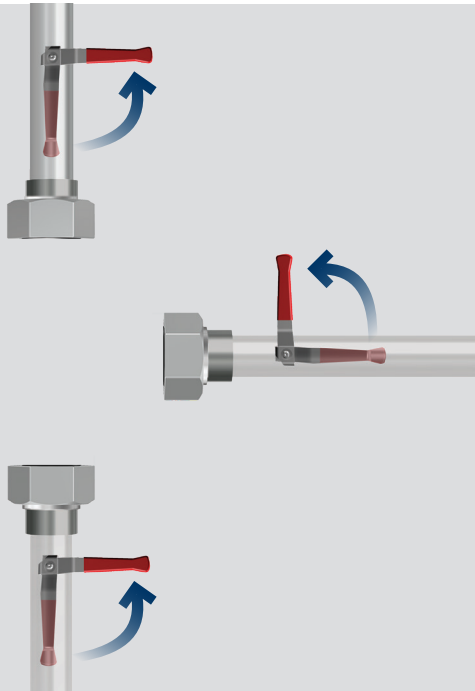




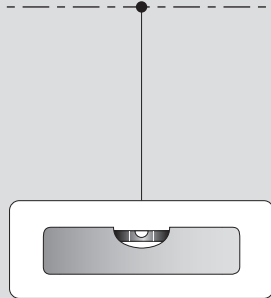
1a

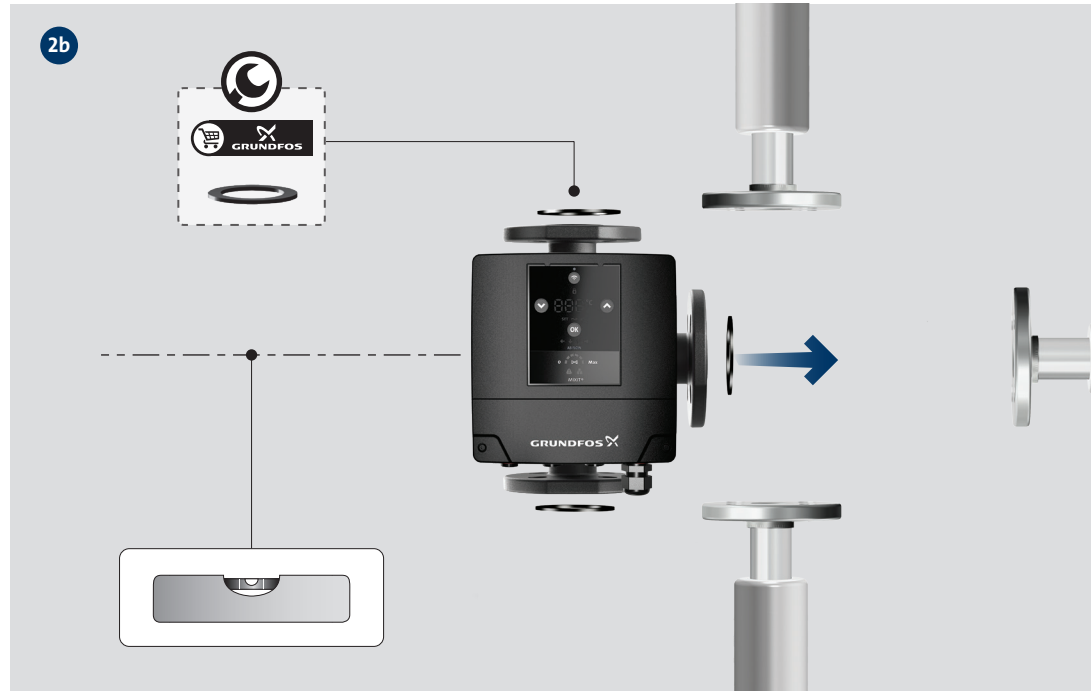
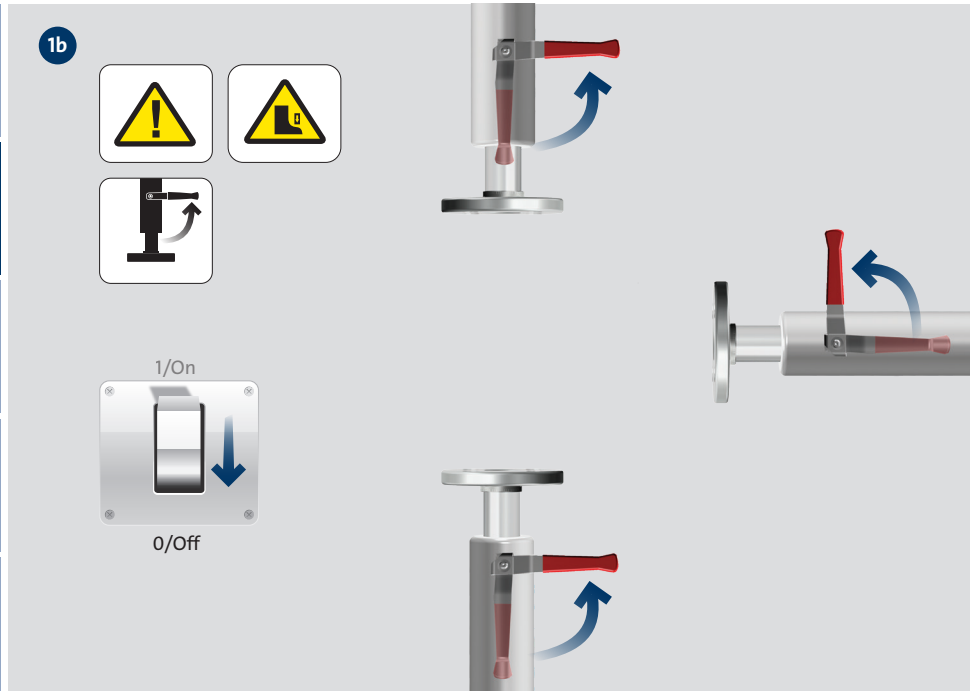


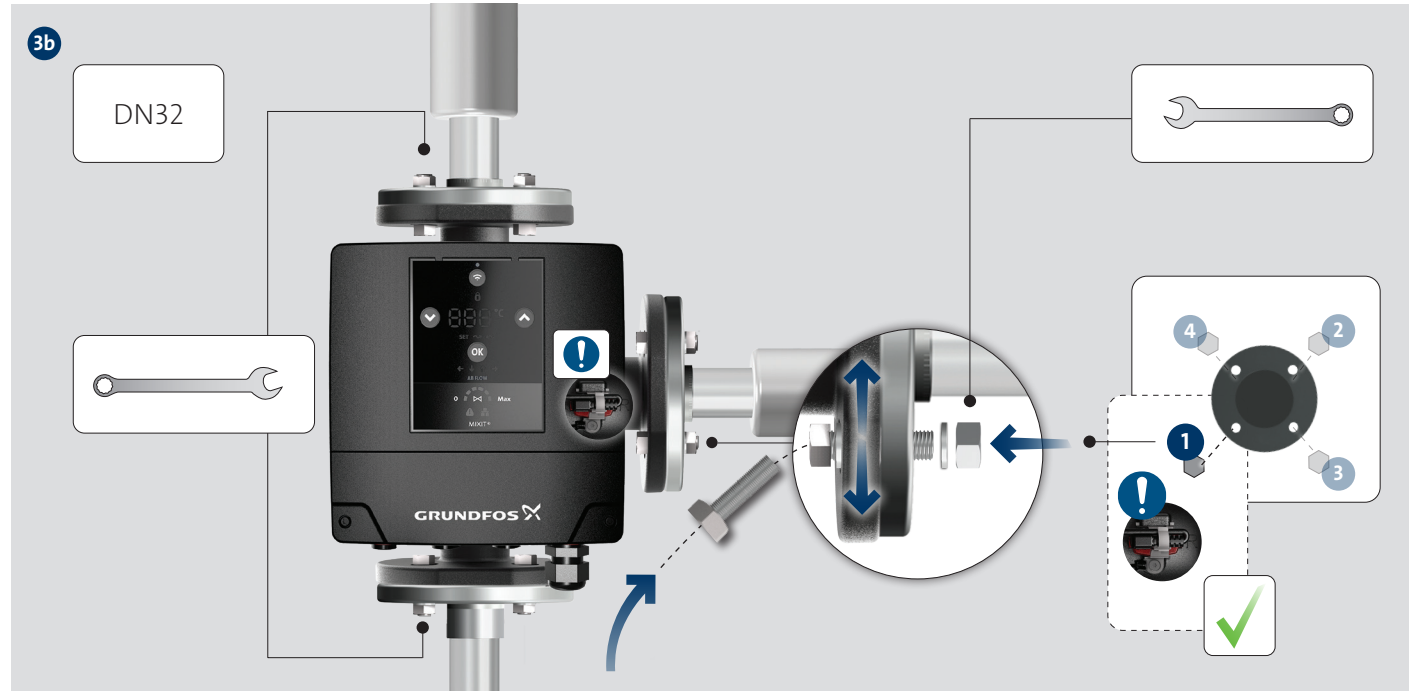
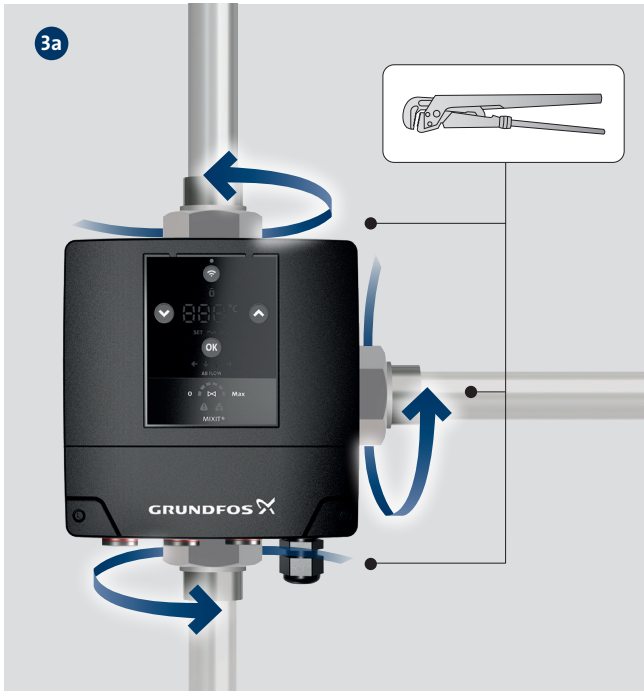
0/Off



2a



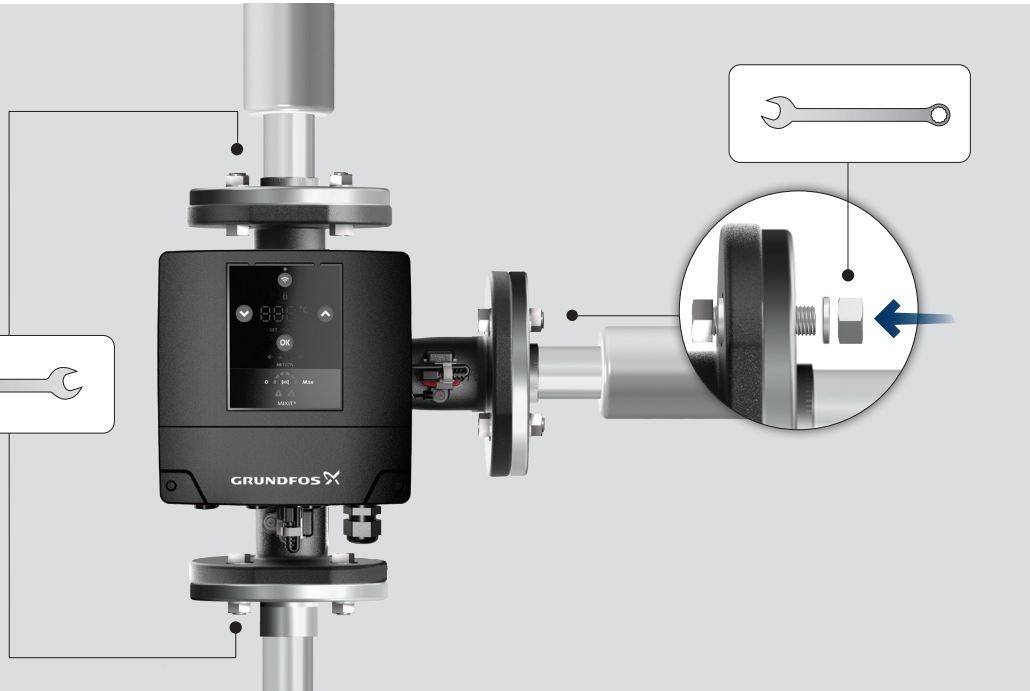
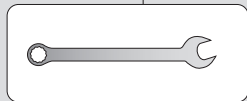




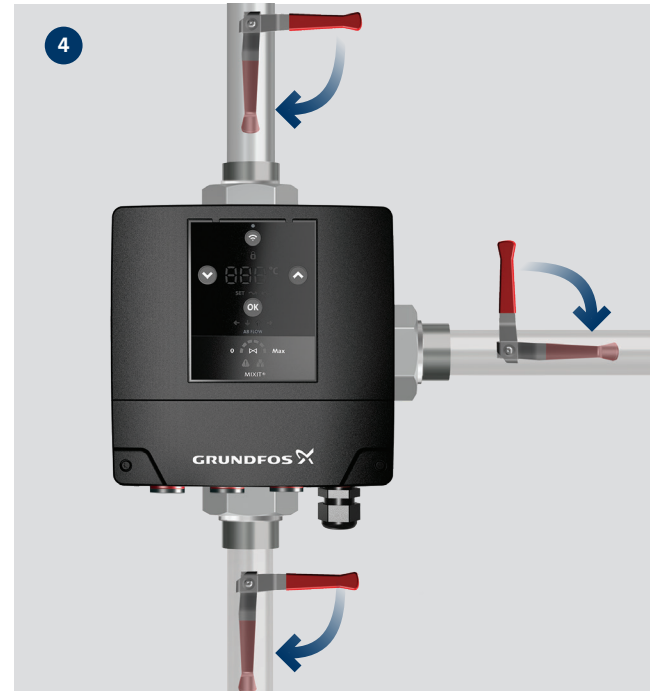


3c

DN40 / DN50



4



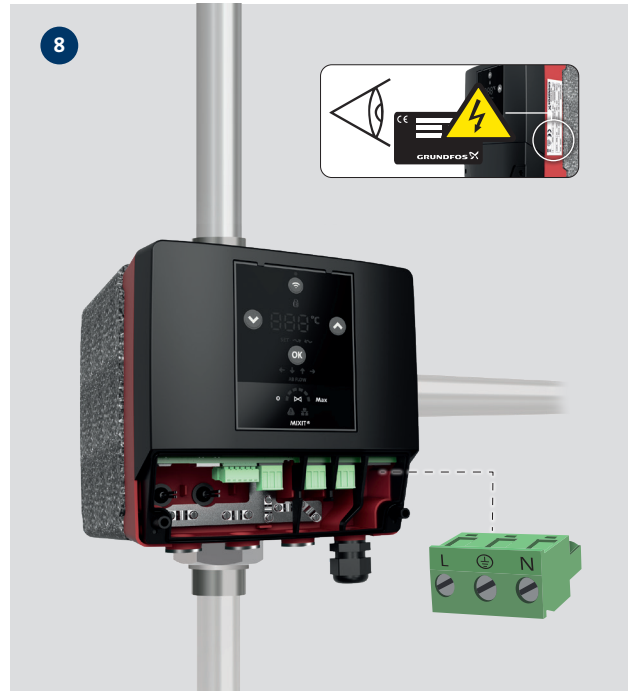
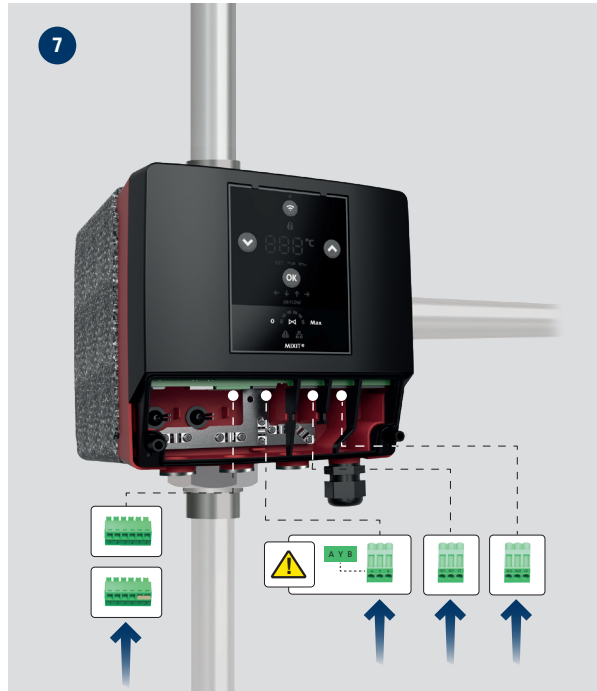
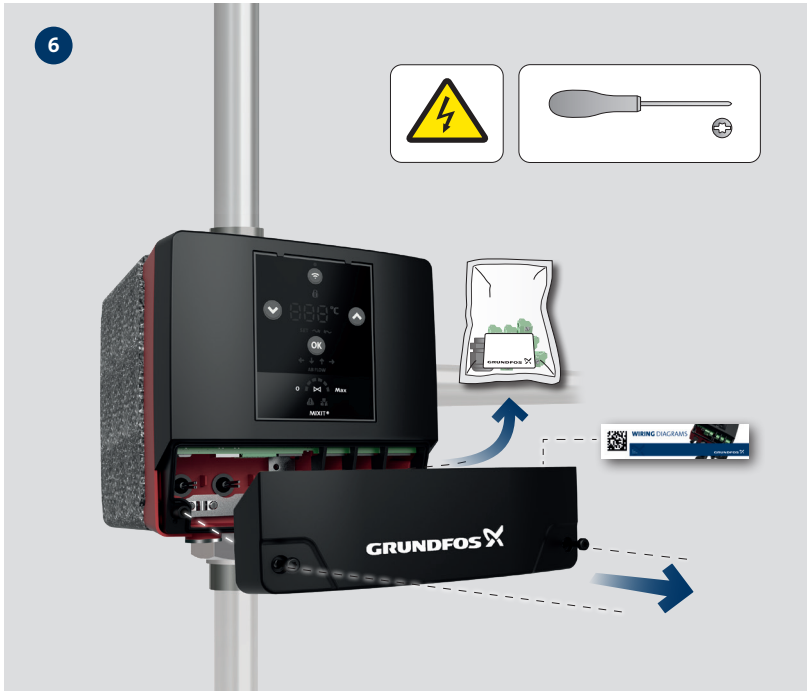


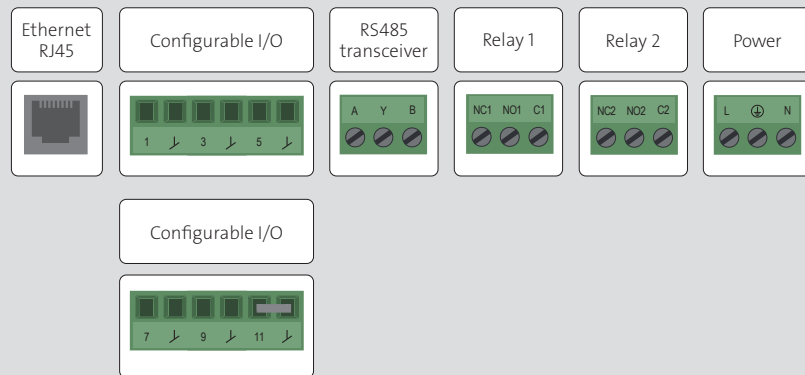
5a

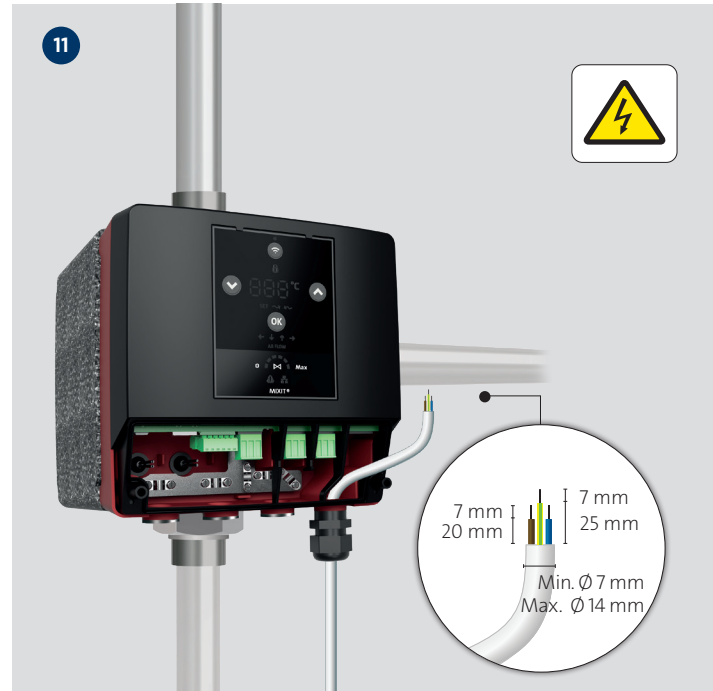
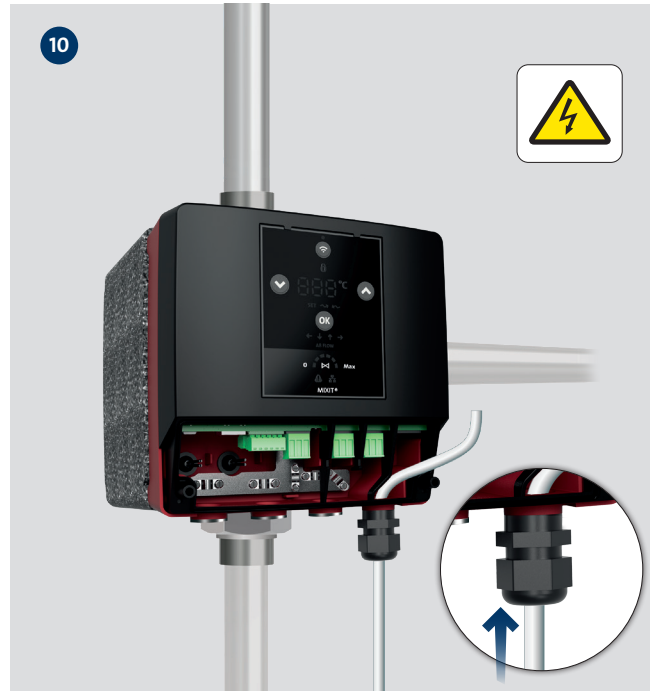
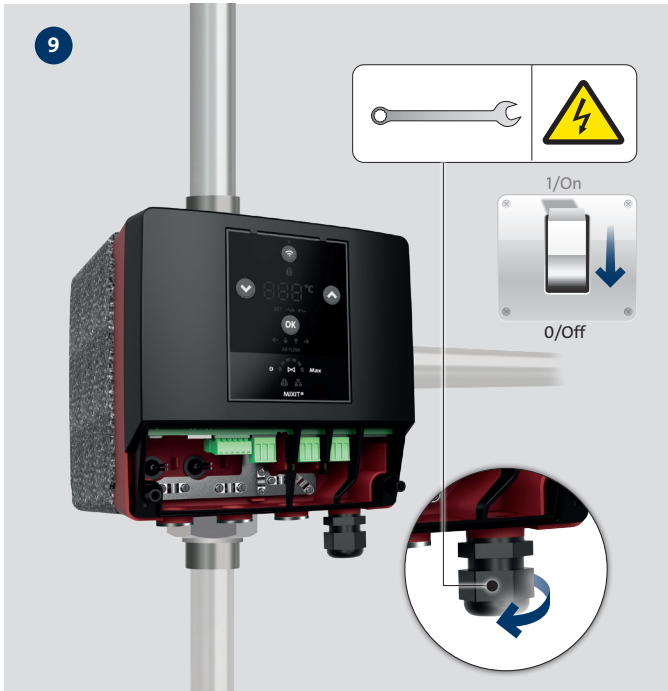


5b

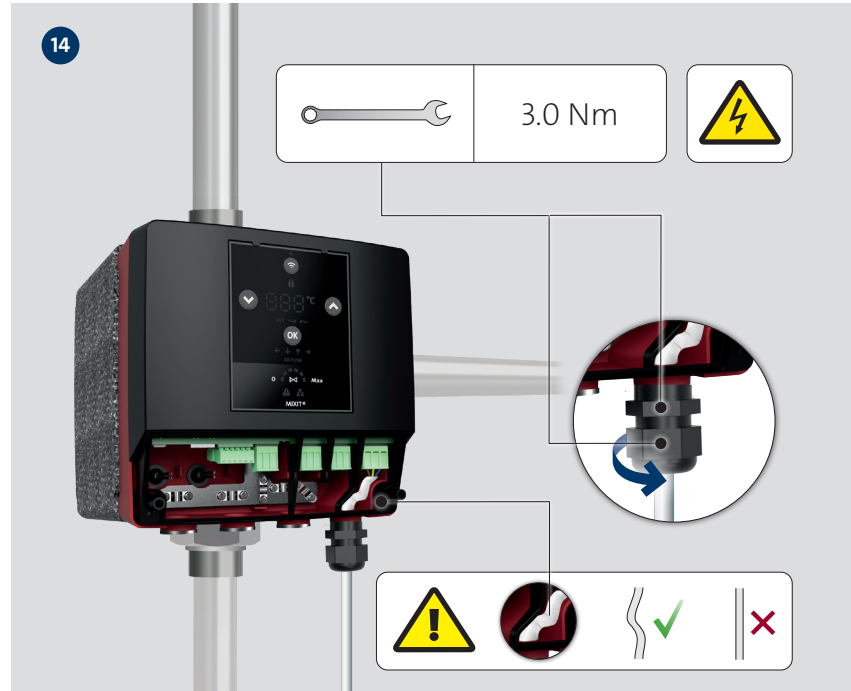
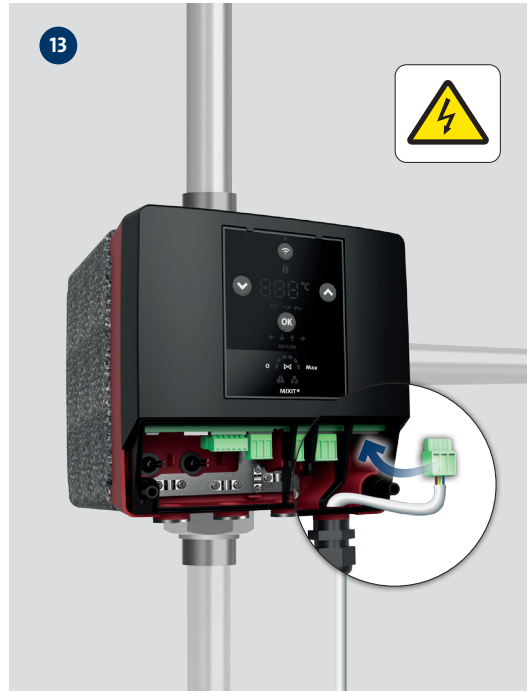
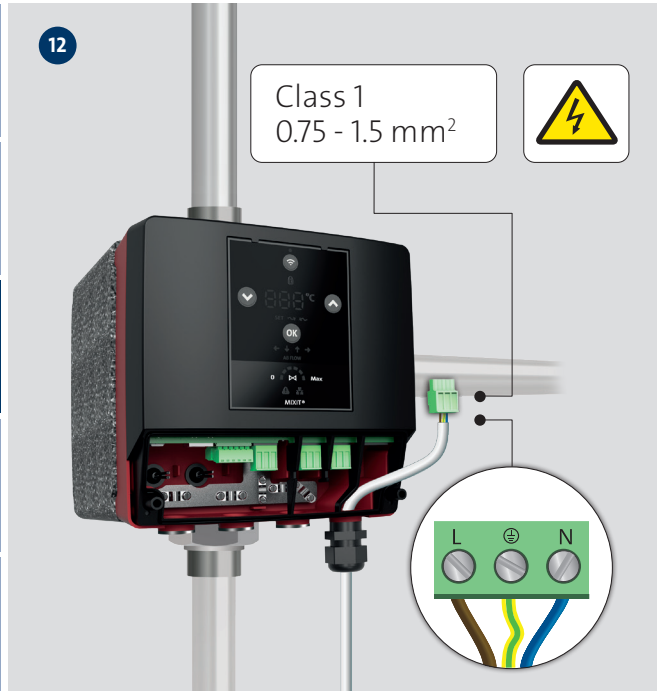






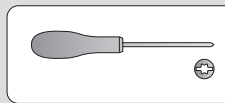








15

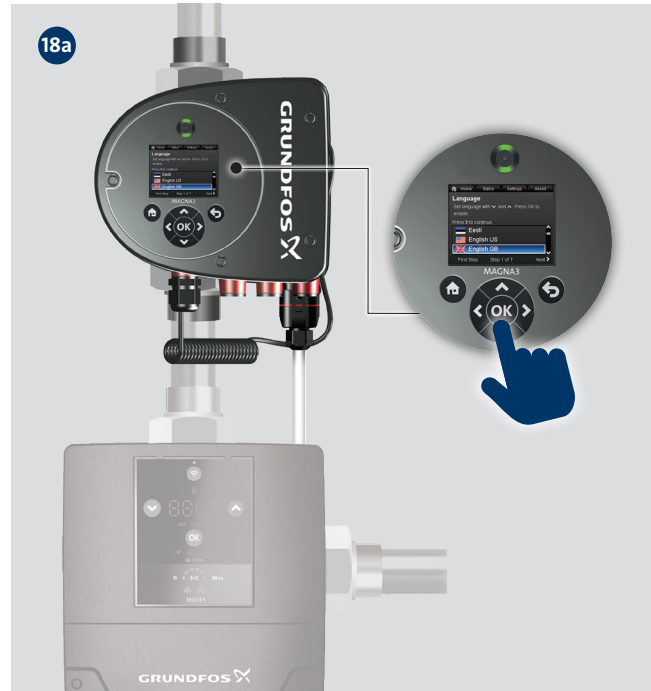
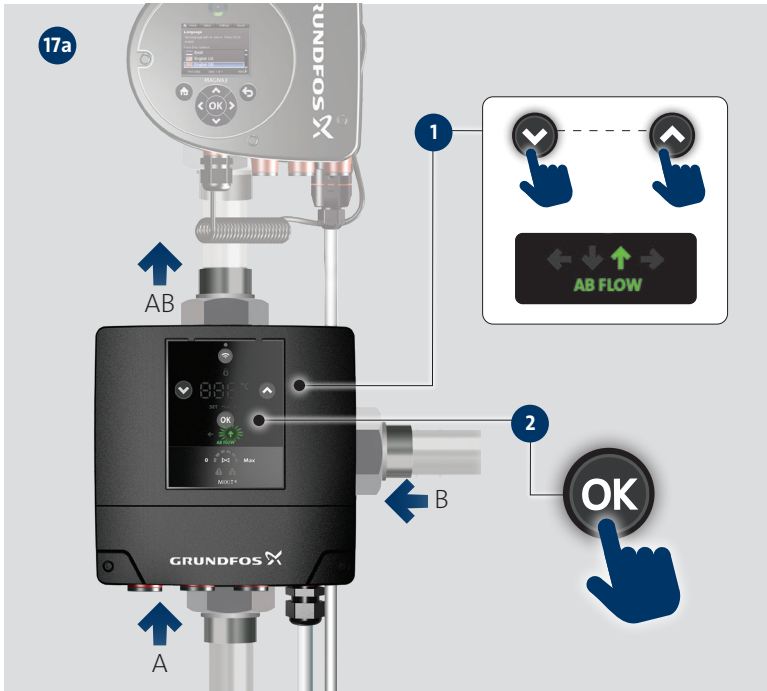


1.1 - 1.4 Nm



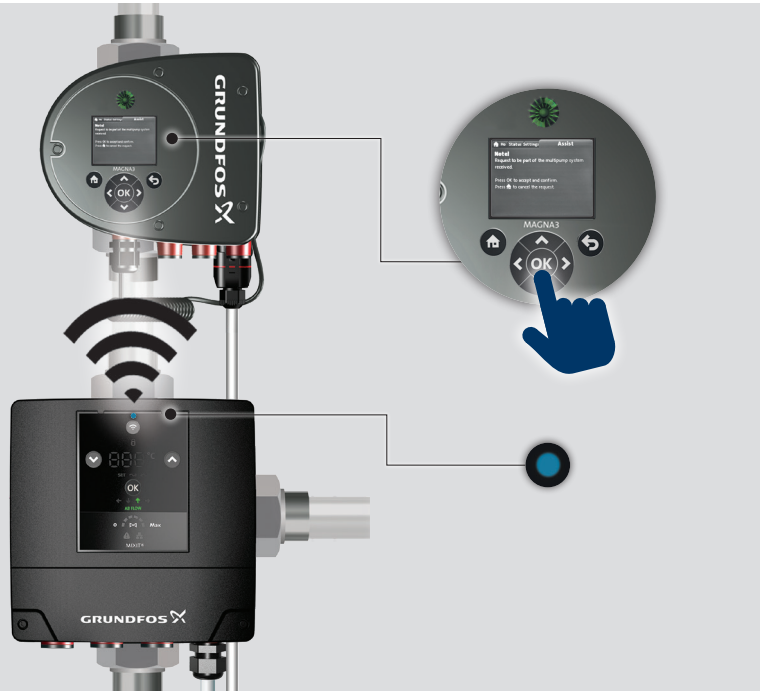
16



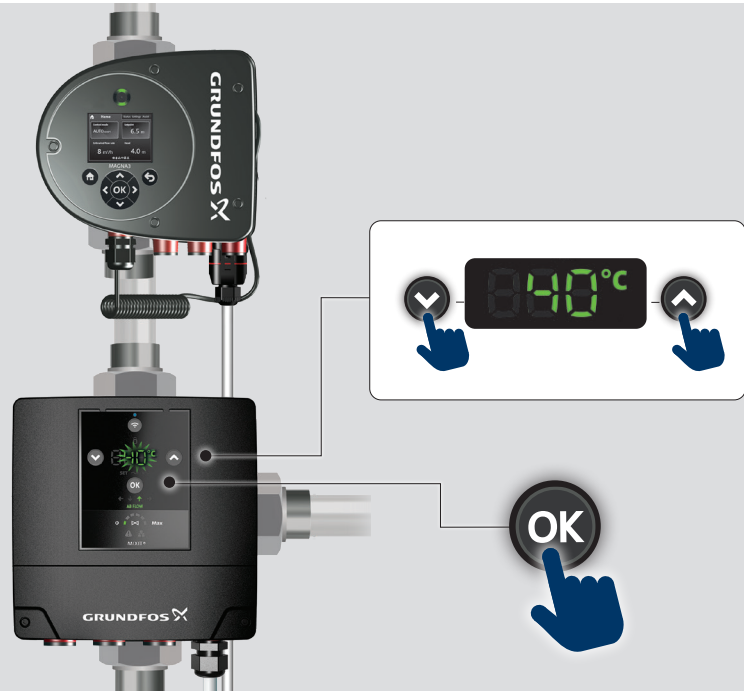


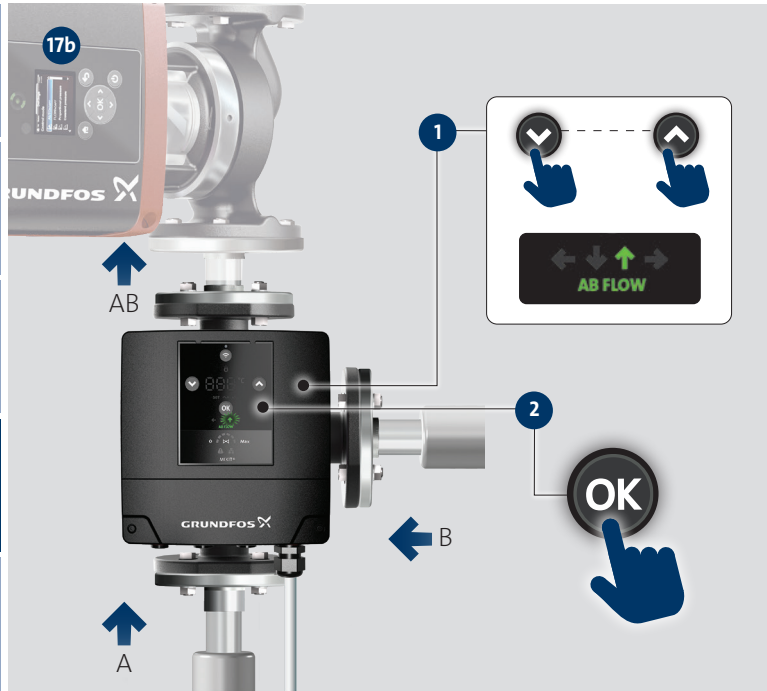


20a



21a









22

Download on the App Store

GET IT ON Google Play

Grundfos GO Remote

GO Remote

23

INSTALL

GO Remote

24

Bluetooth = ON

GO Remote

OPEN

25

Bluetooth = ON

Bluetooth

Radio

IR

List

Connect

GRUNDFOS



---

---

---

---

---

---

---

---

---

---

---

---

---

---

---

---

---

---

---

---



Installation date: \_\_\_\_\_

Installer:

---

---

---

---

99604515 10.2021

ECM: 1327446