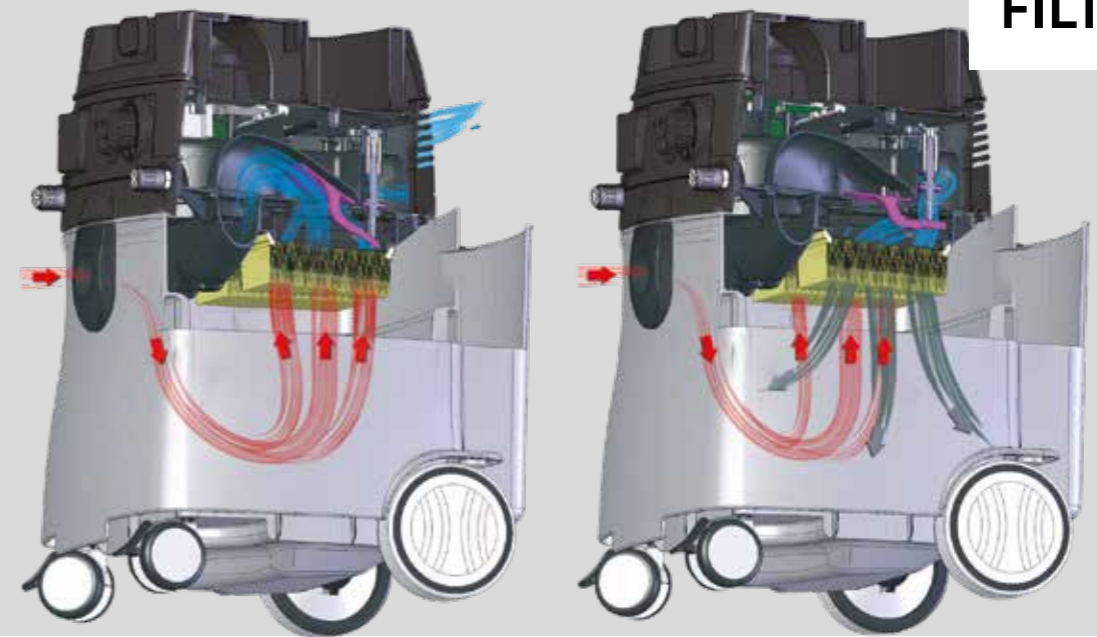




RUPES®



S2 SERIES



Air cycle during normal operation

Air cycle during filter cleaning

1. Turning on and function selector



The blue backlighting indicates that the extractor is ready to be started. Selection of the manual automatic mode. Regulation of engine power from 350 W to 1200 W, in the manual or automatic automatic mode.

2. Selection of the diameter of the extraction hose (M version)



To ensure operator safety, the extractors in the M version, are equipped with a system for controlling the suction power. The system emits an alarm if the speed of the air in the extraction hose drops below the safety levels. For proper functioning of the extractor, set the specific selector on the diameter of the hose utilized before starting to work.

3. Connection of tools for automatic starting of the extractor



Option of connecting one electric tool of up to 2400 W of power and one pneumatic tool, or two pneumatic tools.

4. Multifunction LED



GREEN

Motor on. The led lights up each time extraction is activated. The silent operation of the extractor makes this type of signal necessary.



YELLOW

Container for liquids full (E versions). This led switches on to signal the blocking of the extractor when the level of liquids in the container has exceeded the maximum level.



RED

Service. This led signals the need for routine maintenance to be carried out at an Authorized RUPES Service Center.

AUTOMATIC FILTER CLEANING

To ensure maximum extraction efficiency under all working conditions, the S2 version E extractors have an automatic filter cleaning system (Rupes patent). By means of a system of valves, the air flow passing through the filters is inverted in alternation every 30 seconds, thus ensuring efficient cleaning action. With this innovative system, the operator is able to continue working without any interruption of or reduction in the extraction process.

Cartridge filter

All the vacuum cleaner in the S2 Series are equipped with a double panel filter for a total of 1 sq. meter of filter surface area. All vacuum cleaner, in both the L and M versions, are supplied with a filter made of material certified for class M dust extraction. Two versions of the filters are available:

- paper filters** for extraction of fine and dry dust;
- polyester filters:** washable filters suitable for extraction of fine and dry dust.

Recommended for the extraction of liquids without the need for a filter bag.

Filter bags

There are two different types of filter bags for the S2 series vacuum cleaner:
polyethylene bags recommended for dust and debris originating from cleaning procedures
filter bags in polyester for class M dust

Container drums

The S2 series vacuum cleaners are available in two versions with 30 and 45-liter drums. Their special structure ensures their resistance and manageability during movement in all workplaces. Their shape enables maximum expansion of the filter bag, fully using the volume of space provided by the drum.

Vacuum cleaner connector attachment

All vacuum cleaner in the S2 series are supplied with a multipurpose swivel extraction attachment that makes it possible to use extraction hoses.





Air regulator



Thanks to the new connector attachment with an air regulator patented by RUPES, the hose for connection with pneumatic tools ensures maximum extraction efficiency. In fact, the regulator makes it possible to obtain the correct air flow rate and thus to optimize extraction based on the type of application.

Connection for 2 hoses



The 2-way union complete with 1 clapet valve enables the use of two tools simultaneously. One electric and one pneumatic or two pneumatic tools can be connected to the vacuum cleaner at the same time.

S 230 SERIES

ELECTRONIC

S 230L
S 230EL
S 230EM

PNEUMATIC

S 230PL
S 230EPL
S 230EPM

S 245 SERIES

ELECTRONIC

S 245L
S 245EL
S 245EM

PNEUMATIC

S 245PL
S 245EPL
S 245EPM

TECHNICAL SPECIFICATIONS

		S 230	S 245
Power	W	1x1200	1x1200
Weight	Kg	10,5	13,5
Max. power supplied by power outlets	W	2400	2400
Pressure	mm/h ₂ O	2000	2000
Noise level	dB(A)	70*	73*
Container volume	l	30	45
Air flow rate	m ³ /h	165**	165**
Indicted for dust classes		L	L-M
Filter surface area	m ²	1	1
Connectable tools	n	1	2
Electrical outlets for tools	n	1	1
Air connections for tools	versions	P	P
Automatic filter cleaning	versions	E	E
Ø internal connector attachment	mm	50	50
PNEUMATIC VERSION:			
Feed pressure	bar	6	6
Max. air flow rate	l/min	1450	1450



*dB(A) According to EN 60704-3 standard
**According to EN 60335-269 standard

Extracted dust classification



L Versions

Class L dust extractors with a maximum tolerated exposure value 1.0 mg/m³ (according to the EN60335-2-69/A2 standard).



M Versions

Class M dust extractors with a maximum tolerated exposure value 0.1 mg/m³ (according to the EN60335-2-69/A2 standard), and a selector for the extraction hose diameter.

TYPICAL APPLICATIONS

Fine dust, subject to the general limit for dust, i.e., 3 mg/m³

Dust from mineral substances containing aluminium oxide

Paint dust

Wood dust

Plaster or chalk dust

SUGGESTED VERSION

L, M

L, M

*(L) M

M

M

*(L): Use is possible, but with some restrictions.

NOTE: The suggest versions are indicative. You are advised to check current regulations and standards.

Storage compartment



In the rear part of the 45-liter vacuum cleaner, there is a capacious attachment storage compartment, where the power cord and the extraction hose can be stored after use.

Support plane



In the upper part of the head of the S 230 and S 245 extractors, there is a convenient, multipurpose shelf where tools and related attachments can be stored.

Soft Grip Handle



All the S 245 models come with a soft grip handle for better grip and maneuverability

S 230

Professional vacuum cleaner predisposed for connection with electric and pneumatic tools, with automatic cleaning of the filters (E version)

	S 230L	S 230PL	S 230EL	S 230EPL	S 230EM	S 230EPM
AUTOMATIC FILTER CLEANING			•	•	•	•
AUTOMATIC STARTING OF ELECTRIC TOOLS	•	•	•	•	•	•
AUTOMATIC STARTING OF PNEUMATIC TOOLS		•		•		•
LIQUIDS SENSOR			•	•	•	•
INDICATED FOR DUST CLASSES	L	L	L	L	M	M
DIAMETER SELECTOR HOSE					•	•
FILTER MADE OF PAPER		•		•		•
FILTER MADE OF POLYESTER	•	•	•	•	•	•
WHEELS WITH BRAKE LOCK	•	•	•	•	•	•
POWER REGULATOR EXTRACTOR	•	•	•	•	•	•
SERVICE INDICATOR	•	•	•	•	•	•



COMPATIBLE WITH SYSTAINER T-LOC SYSTEMS

S2 Series vacuum cleaners are equipped with a fast connection for all the SYSTAINER T-LOC modular systems. Therefore, the system can be used as a real working station, where it is possible to store tools and related equipment.



S 245

Professional vacuum cleaner predisposed for connection with electric and pneumatic tools, with automatic cleaning of the filters (E version)



	S 245L	S 245PL	S 245EL	S 245EPL	S 245EM	S 245EPM
AUTOMATIC FILTER CLEANING			•	•	•	•
AUTOMATIC STARTING OF ELECTRIC TOOLS	•	•	•	•	•	•
AUTOMATIC STARTING OF PNEUMATIC TOOLS		•		•		•
LIQUIDS SENSOR			•	•	•	•
INDICATED FOR DUST CLASSES	L	L	L	L	M	M
DIAMETER SELECTOR HOSE					•	•
FILTER MADE OF PAPER		•		•		•
FILTER MADE OF POLYESTER	•	•	•	•	•	•
ATTACHMENT STORAGE COMPARTMENT	•	•	•	•	•	•
WHEELS WITH BRAKE LOCK	•	•	•	•	•	•
POWER REGULATOR EXTRACTOR	•	•	•	•	•	•
SERVICE INDICATOR	•	•	•	•	•	•
2 AIR CONNECTION		•		•		•
SOFT GRIP HANDLE	•	•	•	•	•	•



NEW ANTISTATIC CONIC HOSE ASSEMBLY

BEST VACUUM PERFORMANCE AND HIGHER EFFICIENCY

Thanks to higher internal section, the suction capacity has been increased, optimizing performance of the Dust Extraction System.

The terminal part of the hose is conical for better ergonomic and handling, improving the suction and the tool performance.

The efficient conductivity of the material allows dissipate more efficiently the electrostatic charges generated during the sanding process.

The new RUPES hose assembly is the right product for potentially explosive applications, in according the rule ATEX 2014/34/EU.



ANTISTATIC CONIC HOSE ASSEMBLY



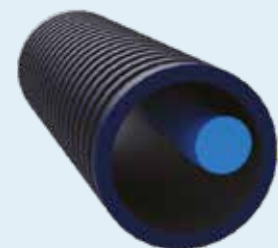
ANTISTATIC HOSE ASSEMBLY FOR PNEUMATIC TOOLS



ANTISTATIC HOSE ASSEMBLY FOR ELECTRIC TOOLS

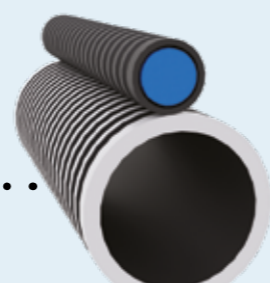
Description	Size	Ømm	Tools	Code
Antistatic hose assembly	5m	29-25	electric	9GAT02001/X
Antistatic hose assembly	5m	29-25	pneumatic	9GAT02004/X
Antistatic hose assembly	5m	38-29	electric	9GAT02025/X
Antistatic hose assembly	5m	38-29	pneumatic	9GAT02019/X
Antistatic hose assembly	8m	29-25	electric	9GAT02003/X
Antistatic hose assembly	8m	29-25	pneumatic	9GAT02002/X
Antistatic hose assembly	8m	38-29	electric	9GAT02026/X
Antistatic hose assembly	8m	38-29	pneumatic	9GAT02023/X

FLOW RATE INCREASED



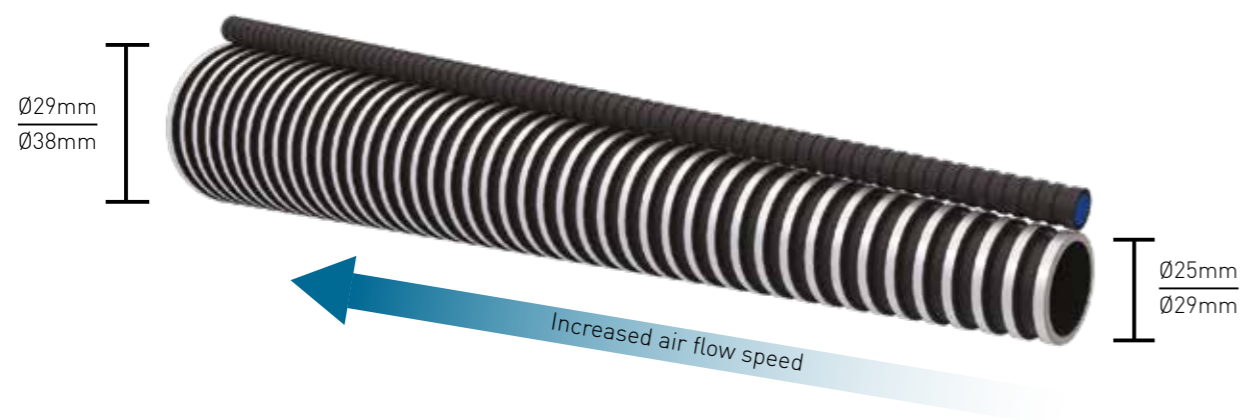
Standard Hose Assembly

FLOW RATE UP TO
+20%



New Conic Hose Assembly

CONICAL SECTION



ANTISTATIC HOSE ASSEMBLY

ANTISTATIC HOSE ASSEMBLY FOR PNEUMATIC TOOLS



ANTISTATIC HOSE ASSEMBLY FOR ELECTRIC TOOLS



Description	Size	Ømm	Tools	Code
Antistatic hose assembly	5m	29	pneumatic	9GAT02004/AS
Antistatic hose assembly	5m	29	electric	9GAT02001/AS
Antistatic hose assembly	8m	29	pneumatic	9GAT02002/AS
Antistatic hose assembly	8m	29	electric	9GAT02003/AS
Antistatic hose assembly	5m	25	electric	9GAT02014/AS
Antistatic hose evaflex (in roll)	30m	29	-	9.1264/30/AS

HOSE ASSEMBLY

HOSE ASSEMBLY FOR PNEUMATIC TOOLS



HOSE ASSEMBLY FOR ELECTRIC TOOLS



Description	Size	Ømm	Tools	Code
Hose assembly	5m	25	electric	9GAT02014/C
Hose assembly	5m	29	pneumatic	9GAT02004/C
Hose assembly	5m	29	electric	9GAT02001/C
Hose assembly	8m	29	pneumatic	9GAT02002/C
Hose assembly	8m	29	electric	9GAT02003/C
Hose assembly	5m	38	pneumatic	9GAT02019/C
Hose assembly	8m	38	pneumatic	9GAT02023/C
Evaflex hose (in roll)	30m	29	-	9.1264/30
Evaflex hose (in roll)	30m	25	-	9GT03047/30
Hose assembly	10m	29	pneumatic	9GAT02021/C

Soft Grip Handle
(included with S245 models)



Polyester filter
Paper filter



Fleece bag



Polyethylene disposal bag



Systainer T-Loc Case



ACCESSORIES

Description	Model	Qty/pkg.	Code
Soft Grip Handle	S 245	1	049.1108/C
Paper filter	S 230 / S 245	1	036.1108
Poliester filter	S 230 / S 245	1	065.1108
Fleece bag	S 230 / S 245	5	030.1108/5
Polyethylene disposal bag	S 230 / S 245	5	052.1108/5
Systainer T-Loc Case	S 230 / S 245	1	9.caseIII

RUPES®

RUPES S.p.A

Via Marconi 3A
20080 Vermezzo (MI) - Italy

T +39 - 02.94.69.41
F +39 - 02.94.94.10.40
E rupes@rupes.it
W www.rupes.com

RUPES USA, Inc.

531 South Taylor Ave
Louisville, CO 80027
T +1- 877-224-5750
E info@rupesusa.com
W www.rupesusa.com

Follow us on:



Due to its constant desire to improve its products, RUPES S.p.A. reserves the right to make any technical or design modification to its products without prior notice. The manufacturer shall not be responsible for printing errors. This document voids and replaces previous ones.