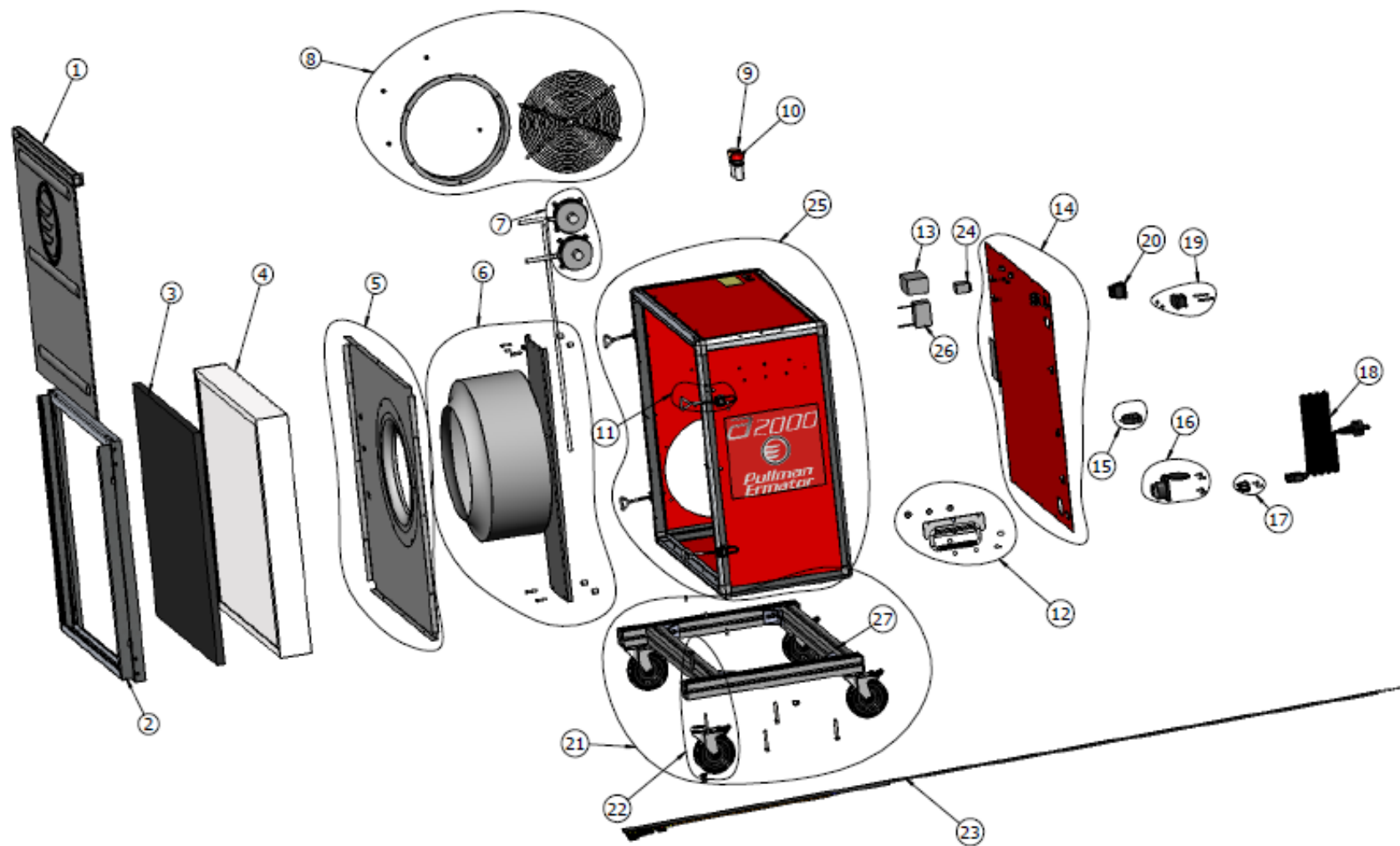


A2000



A2000

| POS. | NUMBER | DESCRIPTION | QTY. |
|------|------------|--|------|
| 1 | 201100209 | PRE-FILTER PROTECT COVER EX. A2000 | 1 |
| 2 | 201100214 | FRONT FRAME COVER FOR A2000 SUB ASSEMBLY | 1 |
| 3 | 201000015 | PRE-FILTER OF A2000 | 1 |
| 4 | 10085 | FILTER OF A2000 | 1 |
| 5 | 201100210 | FRONT FAN INLET COVER EX. A2000 | 1 |
| 6 | 201100222 | FAN ASSEMBLY SET A2000 230V | 1 |
| 7 | 201000428 | PRESSURE SENSOR SET (0-500) EX. A2000 | 1 |
| 8 | 201000427 | AIR OUTLET SET EX. A2000 | 1 |
| 9 | 201100227 | SOUND ALARM 80dB YELLOW LAMP | 1 |
| 10 | 201100228 | SOUND ALARM 80dB RED LAMP | 1 |
| 11 | 201100229 | LOCK SET EX. A2000 | 4 |
| 12 | 201000338 | HANDLE SET EX. A2000 | 2 |
| 13 | 201000433 | CAPACITOR 25 μ F SET EX.230V | 1 |
| 14 | 201000431a | BACK PLATE SET EX.A2000 | 1 |
| 15 | 201000422 | CABLE FIX SET | 1 |
| 16 | 201100212 | ELECTRICAL OUTLET KIT EX.A2000 230V | 1 |
| 17 | 201000339 | POWER INLET KIT EX.A-LINE | 1 |
| 18 | 201100234 | POWER CORD SET 230V | 1 |
| 19 | 201000133 | COUNTER SET | 1 |
| 20 | 201100236 | SWITCH | 1 |
| 21 | 201000337 | CARRIER ASSEMBLY EX. A2000 | 1 |
| 22 | 201000432 | WHEEL SET EX. A2000 | 4 |
| 23 | 201100239 | CABLE KIT A2000 | 1 |
| 24 | 201000430a | RELAY SET | 1 |
| 25 | 201000429a | A2000 MAIN BOX | 1 |
| 26 | 201000434 | CAPACITOR 12 μ F SET EX.230V | 1 |
| 27 | 201000280 | WHEEL FRAME ASSEMBLY KIT | 1 |