

## Instruction Manual MSI GS2



Dräger MSI GmbH  
Rohrstraße 32  
D – 58093 Hagen

Tel.: 0049-2331 / 9584 - 0  
Fax: 0049-2331 / 9584 - 29  
e-mail: [info@draeger-msi.de](mailto:info@draeger-msi.de)

5695046; Edition 2014-05-14

### Remarks

Any use of the MSI GS2 requires a full understanding and strict adherence to these instructions and to the national and international regulations and standards. The instrument is only to be used for the purposes specified here.

**This instruction manual is part of the instrument and kept save.**



EU-wide regulations for the disposal of electric and electronic appliances which have been defined in the EU Directive 2002/96/EC and in national laws are effective from August 2005 and apply to this device. Common household appliances can be disposed of using special collecting and recycling facilities.

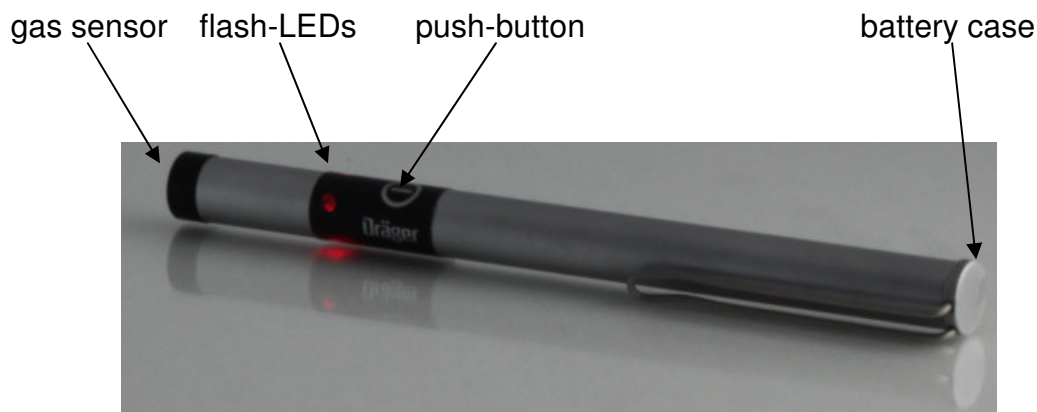
However, as this device has not been registered for household usage, it must not be disposed of through these means. The device can be returned to your national Dräger Sales Organization for disposal. Please do not hesitate to contact Dräger MSI GmbH if you have any further questions on this issue.

Do not throw used batteries into fire or try to open them by force.  
Dispose of the batteries in accordance with national regulations.

### The Leakage Detector

The MSI GS2 is an electronic leakage detector to detect different combustible gases.

**Don't use the MSI GS2 as monitoring unit for your individual safety!**



### Switch on

Switch on the MSI GS2 by pressing the push-button for a short time (< 1s). After switching on the batteries capacity will be shown by flashing LEDs:

4 flashes: batteries full

1 flash: batteries empty

The warm up is shown by continuous flashing LEDs.

The readiness for operation is shown by constant flashing LEDs and a constant ticking (1 x every 2 seconds).

# Instruction manual MSI GS2

## Leakage Detection

Position the instrument such that the gas sensor is purged by ambient air. By rapprochement to a leak and increasing gas concentration the flashing and ticking rate will increase. By removing from a leak and decreasing gas concentration the signals will become slower.

If the signals become fast, slower them by a short press on the push-button. The signals will slow down to 1 time every 2 seconds. With increasing gas concentration the signal rate will rise. With decreasing gas concentration the zero point will be set automatic.

**At a gas leak can be built gas streamers in the ambient air which will be high influenced by air circulation.**

## Switch off

Switch off the MSI GS2 by pressing the push-button for a longer time (> 3s). The MSI GS2 switches off automatically 10 minutes after the last keypress or the last detected signal.

## Changing the batteries

Unscrew the battery case. Insert the new micro-batteries (AAA) in the battery case. The positive pole should show to the gas sensor. Screw up the battery case.

In doing this the MSI GS2 will switch on automatic.

## Function test of the leakage detector

Hold a gas lighter close to the gas sensor, let gas escape out of the lighter without a flame burning. The signal rate should increase.

## Trouble-shooting

Problem	Cause	Remedy
LEDs light after warm up for 10 seconds, after that the instrument switches off	sensor defect	send to service
LEDs light for 2 seconds and than are off for 2 seconds before warm up	calibration fault	instrument runs with basic value (reduced sensitivity) send to service
Instrument cannot be switched on	batteries empty	change batteries

## Technical data

Measuring range	0 – 10,000 ppm (methane)
Sensitivity	< 50 ppm (methane)
Warm up	40 – 60 seconds
Response time	< 2 seconds. (to 10 % L.E.L.)
Signal	audio and visual (1 x every 2 seconds w/o gas)
Sensor	semiconductor
Detectable gases	natural gas, methane, liquid gases, propane, butane, gasoline, jet fuel, alcohol, various thinners, acetone, hydrogen

## Operating conditions

Humidity	10 – 90 % r.F. not condensating
Ambient temperature	+5 – +45 °C
Storage temperature	-20 – +50 °C
Power supply	2 Micro batteries (AAA)
Battery life	approx. 6 h
Dimensions	157 mm x 12 mm x 16 mm
Weight	ca. 57 g

## Service and maintenance

A regular maintenance of the MSI GS2 is not necessary. The correct function should be tested from time to time by a function test.