



Satisfy Professional's Needs

Cordless Cyclone Cleaner DCL500



Filtration system with
cyclone separation



Powered by 18V Li-ion
battery



18V
LITHIUM-ION

Battery is option.

Long Lasting Powerful Suction

Long lasting powerful suction produced by Filtration system with cyclone separation and Powerful brushless DC motor

Filtration system with cyclone separation

By separating dust from air using centrifugal force, large dust is collected in the dust cup of the cyclone section and fine dust particles are captured at the filter. Thus, the filtration area of the filter can be utilized efficiently, reducing filter clogging.



HEPA filter with high filtration capacity for clean exhaust air



Filter cleaning lever

After every use, simply move the lever side to side about ten times to remove dust from the filter.

Easy dust disposal

The dust cup and the filter are washable in water.



Powered by 18V Li-ion battery



Battery are sold separately.

High/low power selection

Zoom pipe can be extended to allow for grip height adjustment to suit user's height.



Orange LED indicator for filter cleaning warning

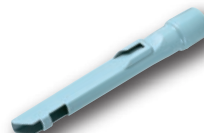
Red LED indicator for battery capacity warning



Crevice nozzle



Shoulder belt for comfortable operation



Cordless Cyclone Cleaner DCL500

- Electronic 2-Speed
- Soft Start

Standard Equipment :

Nozzle, Hose, Zoom Pipe, Hose Hook, Crevice Nozzle, Cleaning Brush, Shoulder Belt, (Battery and Charger are sold separately.)

Capacity	250mL
Max. air flow	1.3m ³ / min
Continuous use (minutes)	Hi: 6-1.5Ah, 12-3.0Ah, 16-4.0Ah Lo: 15-1.5Ah, 30-3.0Ah, 40-4.0Ah
Max. sealed suction (water column)	6.6kPa (660mmH ₂ O)
Dimensions (L x W x H)	352x189x252mm (13-7/8"x7-7/16"x9-7/8") with BL1830 or BL1840 335x189x252mm (13-1/4"x7-7/16"x9-7/8") with BL1815N
Net weight*	3.6kg (7.9lbs) with BL1815N 3.8kg (8.4lbs) with BL1830

*weight according to EPTA-Procedure 01/2003

Items of standard equipment and specifications may vary by country or area.

Makita Corporation

3-11-8 Sumiyoshi-cho, Anjo, Aichi, 446-8502 Japan

PRINTED IN JAPAN BE-AB