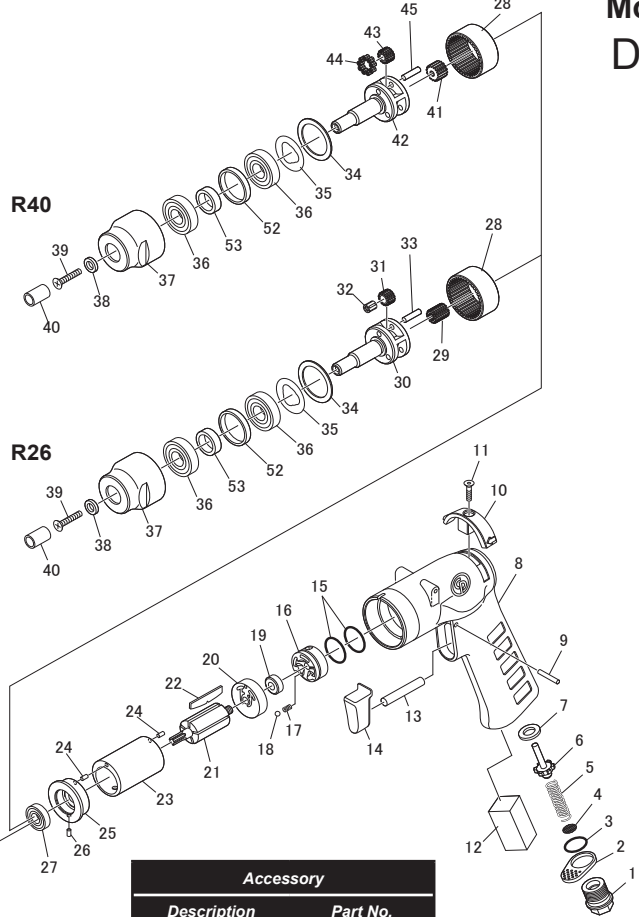
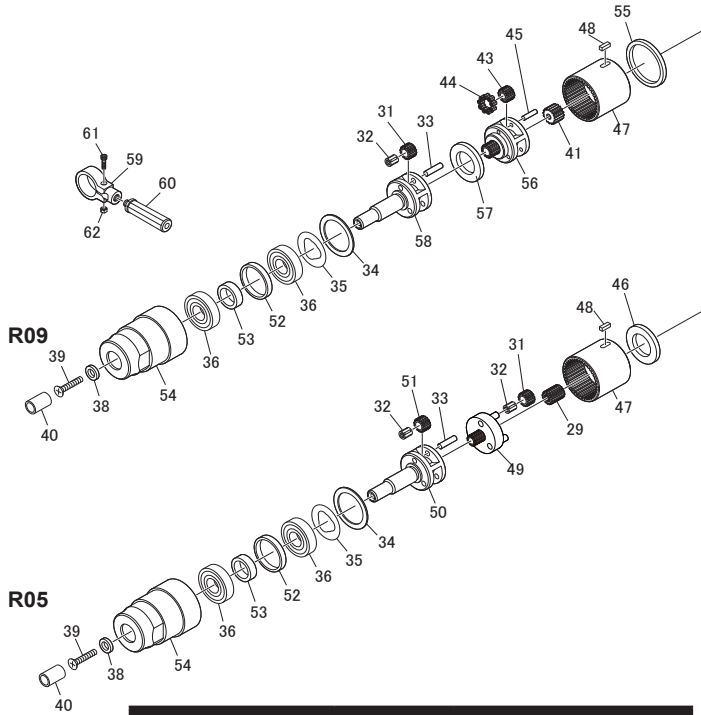




Chicago Pneumatic

CP1114R Series Model C DRILL



| Item | Grease | Tightening torque |
|-----------------------------|-------------|-------------------|
| 1 | / | 24.5 - 28.4 Nm |
| 37 / 54 | / | 44.1 - 53.9 Nm |
| 3 / 15 / 17 / 32 / 44 | Alvania | / |
| 28 / 33 / 41 / 43 / 45 / 48 | Molybdenium | / |

| Accessory | |
|-----------------|----------|
| Description | Part No. |
| Suspension Bail | 473153 |

| Item No. | Part No. | Description | Q'ty |
|----------|-------------------|--|------|
| 6 | CA142460 | Valve | 1 |
| 7 | C139037 | Seat Throttle | 1 |
| 8 | 8940173993 | Housing-Motor | 1 |
| 21 | 8940174000 | Rotor | 1 |
| 23 | 8940174002 | Cylinder | 1 |
| 28 | 8940174004 | Gear-internal(2600) | 1 |
| 30 | 8940174006 | Spindle | 1 |
| 37 | 8940174010 | Housing-Gear | 1 |
| 38 | CA146088 | Chuck Spacer | 1 |
| 42 | 8940174013 | Spindle | 1 |
| 46 | 8940174017 | Spacer | 1 |
| 50 | 8940174020 | Spindle | 1 |
| 54 | 8940174022 | Housing-Gear | 1 |
| 55 | 8940174023 | Spacer | 1 |
| 56 | 8940174024 | Reduction Spindle | 1 |
| 57 | 8940174025 | SpacerA | 1 |
| 58 | 8940174026 | Spindle | 1 |
| 63 | 8940174027 | Chuck R05 - R09 | 1 |
| 64 | 8940174028 | Chuck R26 - R40 | 1 |
| 65 | 8940174029 | Key Chuck | 1 |
| A | 8940174046 | Inlet Kit | |
| 1 | | Inlet Bushing | 1 |
| 2 | | Deflector | 1 |
| 3 | | O-Ring | 1 |
| 4 | CA059037 | Screen | 1 |
| B | 8940174047 | Reverse Button Kit | |
| 10 | | Button-Reverse | 1 |
| 11 | | Screw | 1 |
| C | 8940174048 | Trigger Kit | |
| 9 | | Pin-Roll | 1 |
| 13 | | Pin-Throttle | 1 |
| 14 | | Trigger | 1 |
| D | 8940174049 | Reverse Valve Kit | |
| 15 | | O-Ring | 2 |
| 16 | | Reverse Valve | 1 |
| 17 | | Spring | 1 |
| 18 | | Steel Ball | 1 |
| E | 8940174050 | Rear End Plate Kit | |
| 19 | CA155004 | Ball Bearing | 1 |
| 20 | | Plate-Rear End | 1 |
| 24 | | Pin-Roll | 1 |
| F | 8940174051 | Front End Plate Kit | |
| 24 | | Pin-Roll | 1 |
| 25 | | Plate-Front End | 1 |
| 26 | | Pin Roll | 1 |
| 27 | C087834 | Bearing | 1 |
| G | 8940174052 | Idler Kit A (for CP1114R09 & CP1114R26) | |
| 31 | | Gear-Idler | 3 |
| 32 | KF125239 | Bearing Needle | 3 |
| 33 | | Pin-Idler | 3 |

| Item No. | Part No. | Description | Q'ty |
|----------|-------------------|--|------|
| H | 8940174053 | Idler Kit B (for CP1114R05) | |
| 32 | KF125239 | Bearing Needle | 3 |
| 33 | | Pin-Idler | 3 |
| 51 | | Gear-Idler | 3 |
| I | 8940174054 | Idler Kit C (for CP1114R09 & CP1114R40) | |
| 41 | | Pinion Gear | 1 |
| 43 | | Gear-Idler | 3 |
| 44 | 8940174015 | Needle-Roller | 27 |
| 45 | | Pin-Idler | 3 |
| J | 8940174055 | Reduction Spindle Kit (for CP1114R05) | |
| 29 | | Pinion Gear | 1 |
| 31 | | Gear-Idler | 3 |
| 32 | | Bearing Needle | 3 |
| 49 | | Reduction Spindle | 1 |
| K | 8940174056 | Bearing Kit | |
| 34 | 8940174009 | Washer | 1 |
| 35 | | Seal Plate | 1 |
| 36 | | Bearing Ball | 2 |
| L | 8940174057 | Spacer Kit | |
| 52 | | Spacer1 | 1 |
| 53 | | Spacer2 | 1 |
| M | 8940174058 | Pinion Gear Kit (for CP1114R05 & CP1114R09) | |
| 47 | | Gear-internal(500) | 1 |
| 48 | CA156611 | Key | 1 |
| N | 8940174059 | Tune Up Kit | |
| 3 | | O-Ring | 1 |
| 4 | CA059037 | Screen | 1 |
| 5 | CA156613 | Spring-Compression | 1 |
| 12 | | Muffler | 1 |
| 15 | | O-Ring | 2 |
| 22 | 8940174001 | Blade | 5 |
| O | 8940174060 | Small Parts Kit | |
| 11 | | Screw | 1 |
| 17 | | Spring | 1 |
| 18 | | Steel Ball | 1 |
| 24 | | Pin-Roll | 2 |
| 26 | | Pin Roll | 1 |
| 39 | CA146086 | Chuck Screw | 1 |
| 48 | | Key | 1 |
| P | 8940174061 | Support Handle Kit | |
| 59 | | Ring-Clamp | 1 |
| 60 | | Handle-Support | 1 |
| 61 | | Included in #59 | 1 |
| 62 | | Included in #59 | 1 |

| | | |
|--|------------|---------------------|
| | 8940173960 | Operator's Manual |
| | 8950900061 | Warning label |
| | 6159948740 | Safety Instructions |

Spare parts without part number are not sold separately
Contact us at www.cp.com

03/02/2017
8940174066 Rev. : 03